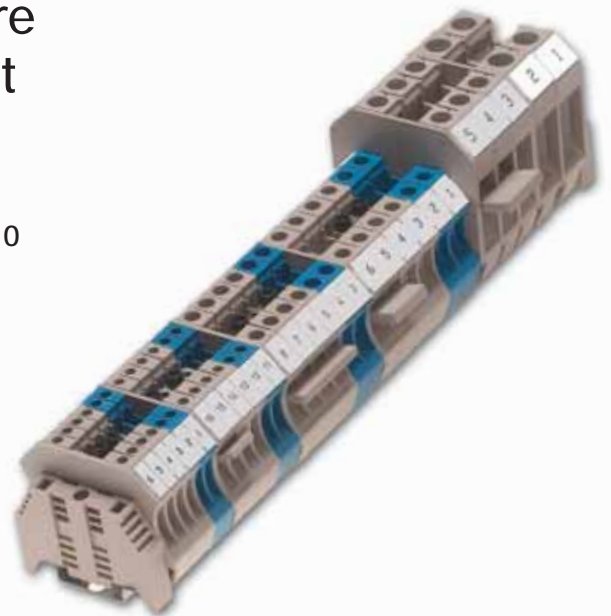


# Industry's Best SCCR Ratings and Exceptional Wiring Flexibility

## DIN-Rail Terminal Blocks with Ratings Up to 200kA SCCR Feature Multiple Bridging Options for Point of Use Configuration

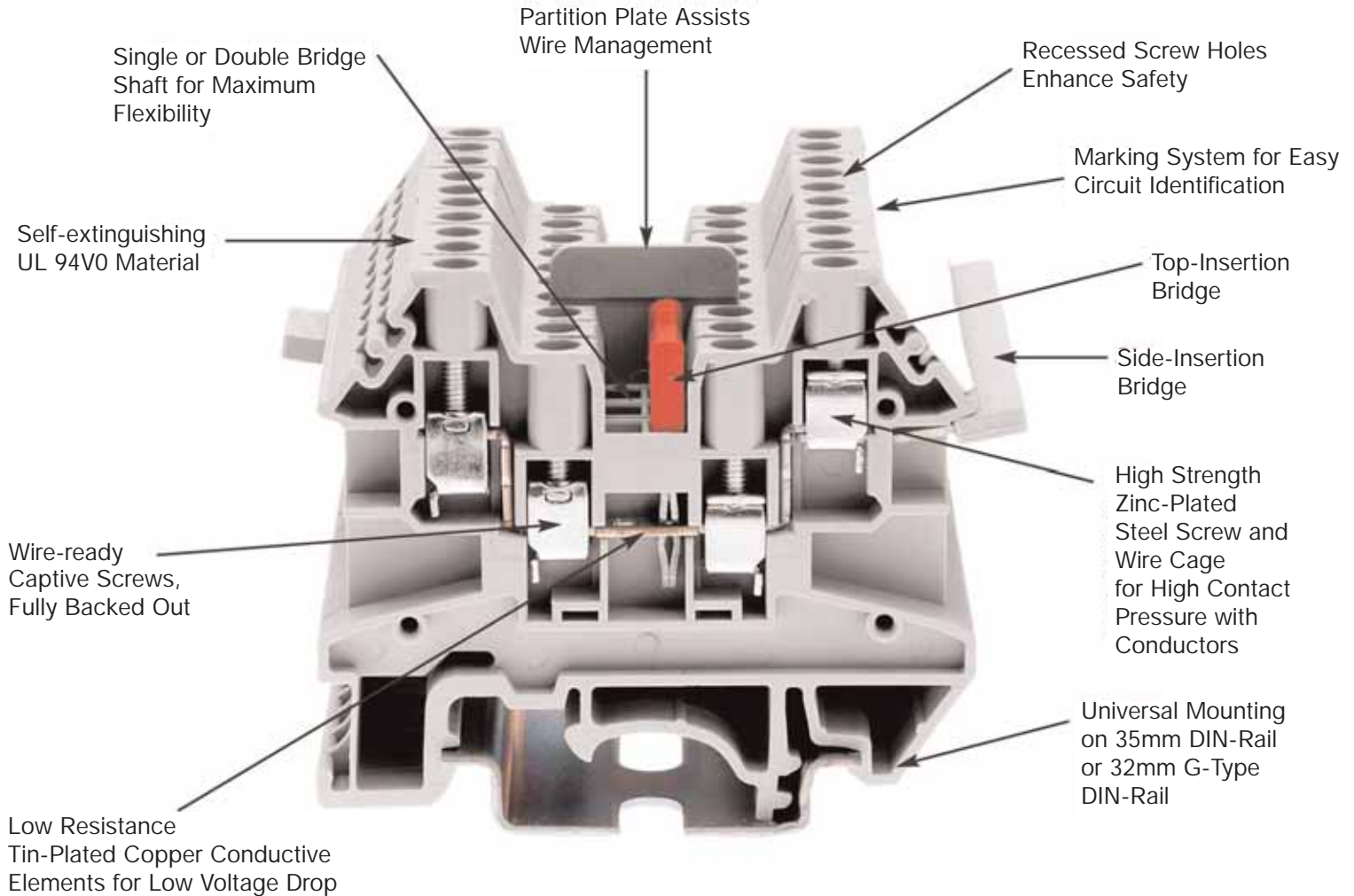
- High SCCR\* rated to ensure compliance with NEC® 110.10
- Available side-insertion bridge and top-insertion bridge offer unmatched power distribution possibilities
- Multiple colors, partition plates, marking system and labels provide easy circuit identification
- UL 94V0 Flammability rated material with superior electromechanical properties
- Zinc-plated steel wire cage and tin-plated copper conductive elements assure high pressure contact force and low voltage drop



\*Short-Circuit Current Rating

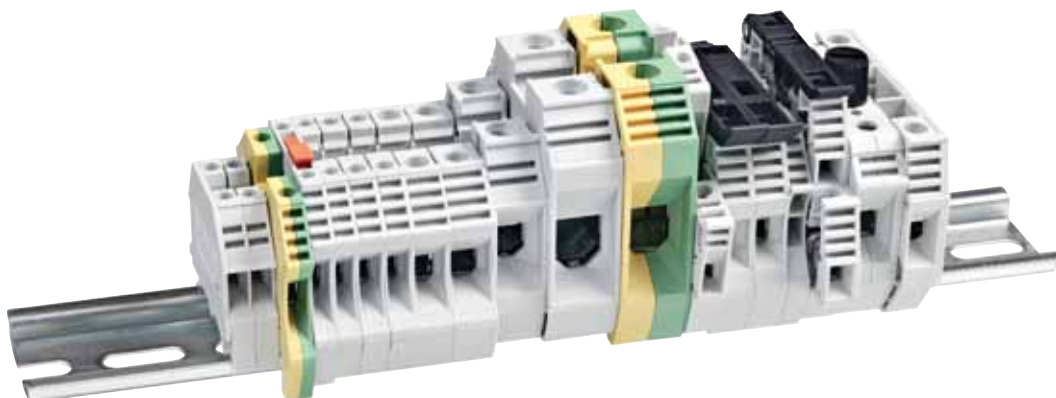
# Terminal Blocks Overview

Introducing a full range of single-level and two-level feed through screw connection DIN-Rail terminal blocks, test and disconnect blocks, grounding blocks, insertion and screw-on bridges, marking system and accessories. High quality and high functionality for all wiring needs.



---

**Full Range of DIN-Rail Terminal Blocks  
to Solve all Wiring Needs**





# Terminal Block Styles

The Cooper Bussmann terminal blocks are available in multiple colors for easy circuit identification, plus popular single and double-bridge shaft systems for maximum power distribution flexibility. Certifications include UL1059 (UL File E62622), cURus and IEC 60947-7. Blocks are Short-Circuit Current Rated (SCCR) from 10 to 200kA.

## Feed Through Terminal Blocks



Single-level feed through terminal blocks up to 600V and 150A for wire sizes AWG 22 to 4/0 (0.5mm<sup>2</sup> to 95mm<sup>2</sup>).

## Fuse Holder Terminal Blocks



Fuse holder terminal blocks protect sensors and relays. Available in lever and screw-cap style, with and without LED indication. Uses standard Cooper Bussmann 5 x 20mm fuses.

## Double Level Terminal Blocks



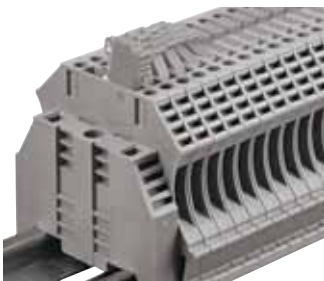
High-density connectivity using double-level terminal blocks. Marking system, side-insertion bridge and top screw-on bridge are standard. Use bridges to achieve any connection topology.

## Internally Jumpered Terminal Blocks

Internally jumpered double-level terminal blocks provide high-density power distribution in 3-in/1-out or 2-in/2-out or 1-in/3-out options with a single block.



## Disconnect Terminal Blocks



Disconnect terminal blocks offer an easy means of circuit disconnect\* with just a flick of a screwdriver.

\*Not for use as a load break disconnect.

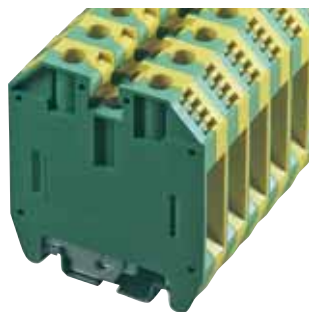
## Test Terminal Blocks

Test terminal blocks with convenient test sockets, plugs, jumpers and accessories to make circuit troubleshooting easy.



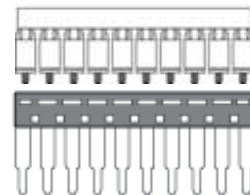
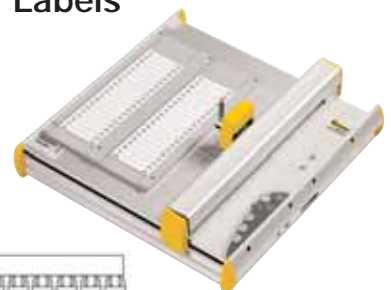
## Grounding Terminal Blocks

Grounding terminal blocks can convert the DIN-Rail into a grounding bar. For wire sizes AWG 26 to 4/0 (0.5mm<sup>2</sup> to 95mm<sup>2</sup>).



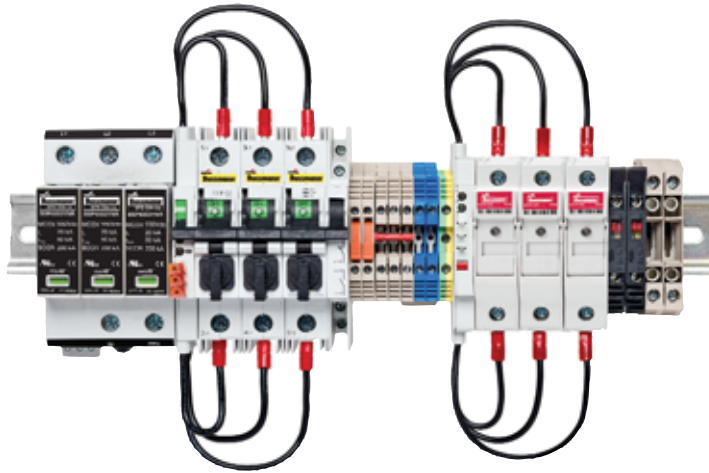
## Marking System and Labels

Open PC-based software, plotter system can print Cooper Bussmann labels as well as most major competitor labels. A decisive advantage. Blank and pre-printed marking labels are available.

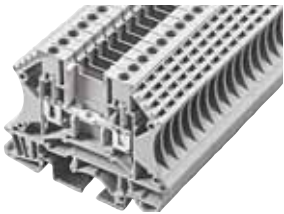


# Flexible Power Distribution & Circuit Protection Solutions

## Everything for Your DIN-Rail – from Cooper Bussmann



### DIN-Rail Terminal Blocks



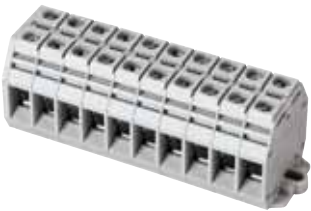
Full range of single and two-level terminal blocks, test and disconnect blocks, plug-in and screw-on bridges, and marking system for control cabinet wiring.

### Low Profile Barrier Strips



Space saving low to high current barrier strips from the leader in the industry. Product can also be custom built to application requirements.

### Panel Mount Terminal Blocks



Flexible alternative to barrier strips with screw and spring-cage wiring connections for feed through and 1-to-2 power distribution.

### Surge Protective Devices (SPDs)



Full range of SPDs for Solar, IEC, Wind, Low-Voltage Power Control, and UL AC/DC applications. Industry's only true, UL 1449 3<sup>rd</sup> Edition compliant overvoltage protectors.

### Modular Fuse Holders



Modular fuse holders for Class CC, 10x38 and Class J fuses with optional remote PLC indication.

### Compact Circuit Protector (CCP)



At 1/3 the space required by a molded case circuit breaker, the CCP saves space in your panel. High SCCR DIN-Rail mounted electrical disconnect.

### Power Distribution Blocks



UL Listed, finger-safe enclosed power distribution blocks offer high SCCR. Includes splicer blocks with 1-to-21 load distribution options per pole.